

Use this guide to help you select the right components to meet your anti-theft needs.

IN THIS GUIDE

KEEPTABS SYSTEM OVERVIEW	-	-	-	-	-	(page 1)
STEP 1: DETERMINE YOUR SECURE POINT	-	-	-	-	-	(page 2)
STEP 2: ASSEMBLING ANCHORS & CABLES	-	-	-	-	-	(page 3)
STEP 3: SECURING YOUR DEVICES	-	-	-	-	-	(page 4)
PART SELECTION GUIDE	-	-	-	-	-	(page 5)
KEEPTABS APPLICATIONS	-	-	-	-	-	(page 6)

KEEPTABS SYSTEM OVERVIEW



SecurTech KeepTabs® Cable Lock System

- Secure remote controls and other small devices
- Flexible self-assembly kits with different cable lengths
- Anchors can be adhered temporarily or permanently
- A great way to keep your stuff where it belongs

The KeepTabs® cable lock system uses a **cable** with an **anchor** at each end. The anchor at one end of the cable is adhered to your device. The anchor at the other end of the cable is locked to a secure point with a **padlock** , or can be permanently glued to any flat surface.

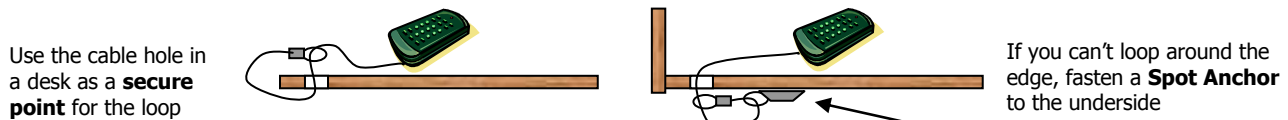
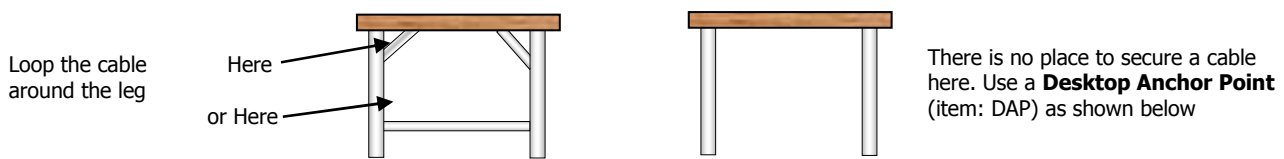


STEP 1: DETERMINE YOUR SECURE POINT

The **secure point** is the immovable object that keeps the whole system in place. You can loop a cable around part of it, through a hole in it, or fasten an anchor to it.

- Good Secure Points: Heavy desk or table, lab bench, any object that is built-in
Bad Secure Points: Portable table or desk, anything lightweight or fragile

Find a spot on the **secure point** that allows you to secure a cable loop, anchor or padlock.

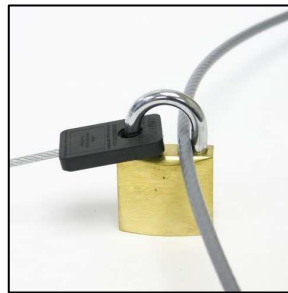


The glue-and-screw **Desktop Anchor Point** (item: DAP) creates a secure point on any wood surface



Wrap a cable around a **secure point** and padlock the anchor to the cable

Loop the anchor through the cable hole in your desk and padlock the anchor to the cable.



Padlock a KeepTabs anchor to a Spot® Anchor security cable that is already secured.

STEP 2: ASSEMBLING ANCHORS & CABLES

KeepTabs are packaged several different ways:

- A) In a kit with 6 pre-cut cables and 12 anchor bodies
(pre-cut cables come in 24", 36" and 48" lengths)
- B) In a kit with a single 25' you-cut cable and 12 anchor bodies
- C) In bulk:
 - a. You-cut cable in 50' reels
 - b. Anchor bodies by the dozen

Other variations are available by special order, including:

- A) Pre-cut cables of any length
- B) Customized kits with any anchor quantity and cable lengths
- C) Pre-assembled anchors and cables



Please refer to the [KeepTabs application instructions](#) for step-by-step instructions

Here are some considerations when choosing KeepTabs products.

- Determine in advance what length of cables you need. Measure the distance from the secure point to the place where you will use your device. Longer cables provide more flexibility, so too long is better than too short.
- It is not recommended to glue a KeepTabs anchor to a wood surface. To create a secure point, either drill a 1" hole through your desktop or use the glue-and-screw Desktop Anchor Point (item DAP).
- The hole in KeepTabs anchors is fitted to the SecurTech 1-1/4" padlock (item B125). The B125 shackle can fit through the hole of up to four KeepTabs anchors at a time.

STEP 3: SECURING YOUR DEVICES

A KeepTabs cable has an anchor at each end: One end attaches to your device, and the other end is attached to a secure point.

Before you adhere a KeepTabs anchor to anything, you must first decide:

Does this anchor need to be **permanently** or **temporarily** attached? Permanent mounting is more secure, while temporary mounting is more flexible.

- If permanently, use SecurTech close bond liquid adhesive (CBA).
- If temporarily, use SecurTech silicone rubber adhesive (SRA).

SecurTech Close
Bond Liquid Adhesive
(item CBA)



SecurTech Silicone
Rubber Adhesive
(item SRA)

Are you mounting the KeepTabs anchor to a curved surface?

- If your device does not have a flat mounting surface, use SRA silicone rubber adhesive. SRA can form to a gently curved surface and provides a strong but non-permanent bond.

Please refer to the [KeepTabs application instructions](#) for step-by-step instructions

KeepTabs anchor
padlocked to
Desktop Anchor
Point (DAP)



KeepTabs anchor
attached to modem
with CBA liquid
adhesive

PART SELECTION GUIDE

1. Select KeepTabs Products

LENGTH	ITEM #	PURPOSE	QUANTITY
24" (6)	RA2-24	Kit to secure 6 small devices	
36" (6)	RA2-36	Kit to secure 6 small devices	
48" (6)	RA2-48	Kit to secure 6 small devices	
25' (1)	RA2-6	Kit to secure 6 small devices	
50' (1)	CL50	Additional bulk you-cut cable	
N/A	RA2	Additional bulk anchor bodies (12)	

2. Select Adhesive Type

Type	ITEM #	PURPOSE	QUANTITY
Liquid	CBA*	Permanent mounting on flat surfaces	
Silicone	SRA	Temporary mounting on flat or curved surfaces	

*One bottle of CBA liquid adhesive is included free with every KeepTabs kit.

3. Select Brass Padlocks

SIZE	ITEM #	PURPOSE	QUANTITY
1-1/4"	B125	To lock KeepTabs anchors and cables	

KEEPTABS APPLICATIONS

For the Office

- Postal scales
- External hard drives
- Paper cutters
- Binders & punches
- Desktop clocks
- Wireless charging stations
- Modems & routers

For Retail Countertops

- Donation boxes
- Credit card terminals
- Calculators & adding machines
- Phone systems

For Schools, Hospitals, Group Living

- Remote controls
- e-Readers
- Test & measurement devices
- Microscopes
- Video game systems
- Portable music systems
- Stereo speakers
- Security cameras
- Photo scanners & printers
- Surge suppressors

