

**CAUTION:** Adhesive bonds on contact. Please read entire instructions first.

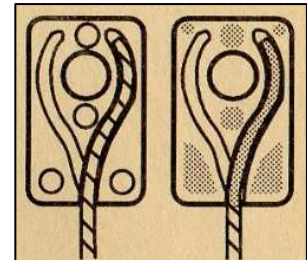
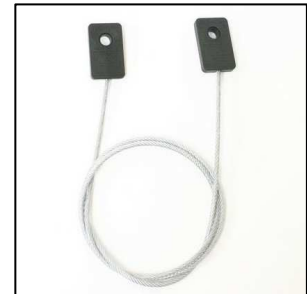
There are two types of adhesive used for specific KeepTabs applications:

- 1) **Close Bond Adhesive (CBA):** This is a liquid adhesive that is used for assembling KeepTabs anchors. It is also used for attaching the anchors permanently to equipment with flat surfaces only.
- 2) **Silicon Rubber Adhesive (SRA):** This is a rubber adhesive that is used for temporary mounting of KeepTabs anchors on equipment with flat, irregular or slightly curved surfaces.



### To assemble KeepTabs anchors and cables:

- To assemble a cable with a KeepTabs anchor at each end, choose one cable and two of each type of anchor pieces.
- Press the cable snugly into the appropriate cable slot. Be certain the cable is pressed down flush. Leave 1/16" of space at the tip (illustration / left image).
- Apply liquid adhesive over the cable in the slot and on the high points on the anchor (illustration / right image). Adhesive should coat the top of the cable and seep down, which adheres it to the anchor. Adhesive is moisture activated so it may be helpful to blow on wet adhesive.
- Immediately press the anchor cover tightly in place and hold firmly for at least 30 seconds. Wipe away any excess adhesive that oozes from the edges. Bend the cable at the base of the anchor to straighten it.
- Repeat the above steps to attach a KeepTabs anchor to the other end of the cable.

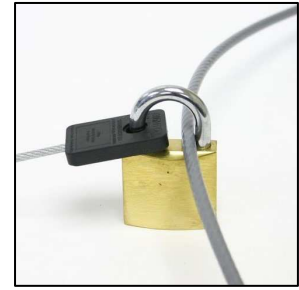
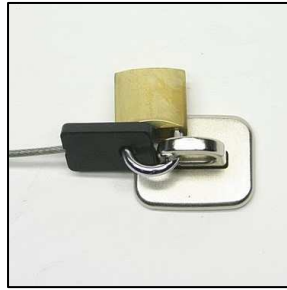


### To install KeepTabs anchors on equipment using CBA (permanent adhesion):

- Select the best location on your device to mount the anchor. Position the device so that the mounting surface is horizontal.
- Clean gluing surface. Apply a liberal bead of adhesive in a Z pattern across the anchor. Adhesive is moisture activated so it may be helpful to blow on wet adhesive.
- Press the anchor against the device without twisting and hold firmly for at least 30 seconds. It is normal for some adhesive to ooze out the sides. Wipe away any excess adhesive with a tissue.
- Allow several hours for adhesive to set. Maximum bond is achieved after 24 hours. Once the adhesive is set, the anchor cannot be removed or adjusted.

**To lock down your device with a KeepTabs cable lock:**

- Photo 1: Pass the cable through a hole in a desk and lock the anchor to the cable
- Photo 2: Lock the anchor to a Desktop Anchor Point (SecurTech item: DAP)
- Photo 3: Wrap the cable around a secure fixture and lock the anchor to the cable
- Photo 4: Padlock the KeepTabs anchor to a SecurTech security cable



**To install KeepTabs anchors on equipment using SRA (temporary attachment):**

- Select the best location on your device to mount the anchor. Clean gluing surface.
- Apply a bead of Silicone Rubber Adhesive in a Z pattern across the anchor.
- Press anchor against the device without twisting and hold firmly in place for at least 30 seconds. Wipe away any excess adhesive with a tissue. Allow 24 hours for adhesive to fully set.

**To remove KeepTabs anchors applied with Silicone Rubber Adhesive:**

- Use a blunt putty knife. Press the blade between the device and the silicone rubber adhesive and slowly shear the KeepTabs anchor from the device.
- Do not bend the putty knife during this process or you may damage your device. A slow, persistent cutting pressure is most effective.

**CAUTION:** Avoid getting adhesive on skin, in eyes or on clothes. Keep out of the reach of children. Use with care.

Thank you for choosing SecurTech